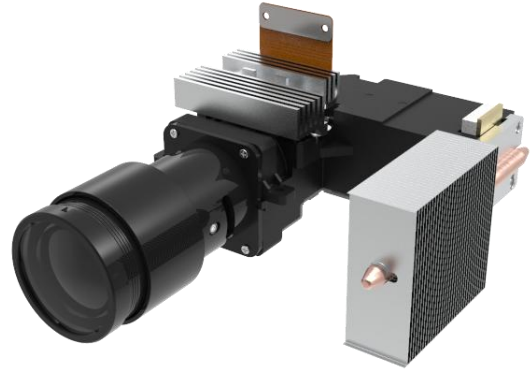




M10BT14D(LC)

3D 扫描投影光机

Projector engine for 3D Scanning



显示芯片: Panel:	DLP4710LC 0.47 1080p DMD
物理分辨率: Physical resolution:	1920×1080
光源: Light source:	Blue LED ($\lambda=456\text{nm}$)
输出光功率: Output power:	1.7W
尺寸(mm): Dimension(mm):	157×113×51.7
对比度(FOFO): Contrast ratio(FOFO):	1000:1
均匀性(JBMA): Uniformity (JBMA):	90%
偏轴: Offset:	0%
曝光面积: Exposure area:	144mm×81mm
工作距离: Working Distance:	202.6mm
像面像素尺寸: ImagePixelSize:	75um
畸变 (设计值) : Distortion (Design Value) :	0.2%